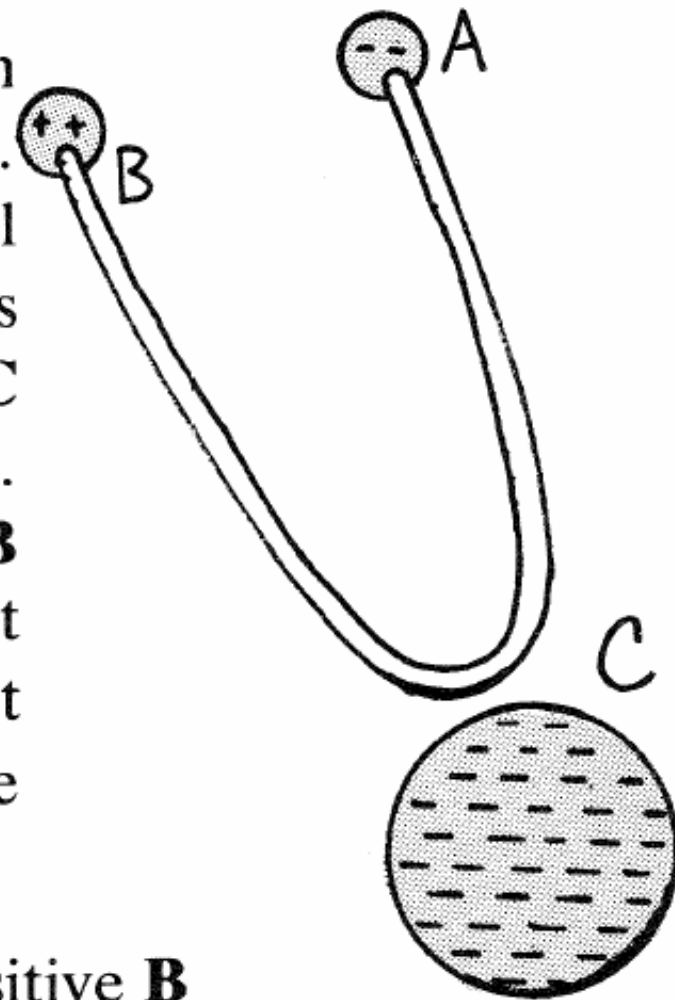


ELECTRIC PIPE

This is an important question so be careful with this one. Suppose object **A** has a small negative charge and object **B** has a small positive charge. Object **C** has a very large negative charge. Further suppose that **A** and **B** are joined by a copper wire that goes very close to but does not touch **C**. What will happen is the negative charge from **A** will



- flow through the wire to positive **B**
- not flow to **B** because of the repelling influence of **C**